



## OUR COMPANY

**Most knowledgeable  
and friendly  
Logistics Partner  
you'll ever need**

**Mandre Logistics was established in 2012 as a marketing company and appointed to represent small transporting companies.**

**This unification enable the companies to offer a wider range of services, more competitive.**

**Based on the formation of Mandre Logistics making use of Sub-Contractors, we are quite unique. We consider ourselves as a team and a unification running under Mandre Logistics.**

**Our Sub-Contractors are fixed and only work for us, thus gives us the advantage to be involved in the management of all Sub-Contractors' trucks.**

**Our Company is residing from South Africa, Gauteng. Not only do we own our own yard and diesel depot, 70% of our yard is being rented as a truck yard/workshop space from most of our Sub-Contractors.**

**Mandre Logistics consists of 62 506 m<sup>2</sup> of land, divided into 20 000 m<sup>2</sup> of workshops / storage space and 42 506 m<sup>2</sup> of dedicated space for trucks and truck needs. The yard offers a variety of services, such as wash bays, 24hr security, forklift hire, diesel depot and refreshment areas.**





# OPERATIONS

**We primarily focus on cross-border loads to and from South Africa, Zimbabwe, Zambia, Mozambique and Botswana. 90% of our business is with the end user/our customer directly and 10% we work through reputable and/or assigned Brokers.**

**We strive to always deal with the Customer directly, as this gives us the opportunity to consolidate new and improved Business Relationships.**

**Whether Mandre Logistics deals directly or through a Broker, we guarantee our best and most loyal services at all times.**

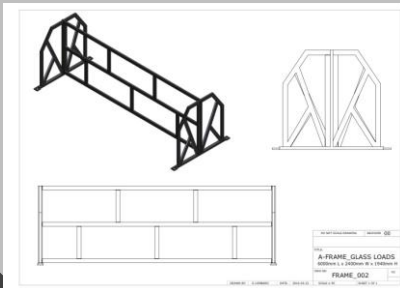


**The relationships with our Customers is of utmost importance to us, thus it has led us to some unique loads internally – supporting them in their branch expansions.**



**Most of our loads entails custom modifications to our trailers as well as specialised loading equipment to secure the load whilst in transit. These modifications are being done inhouse by Mandre Logistics.**

**Our main commodities: Various specifications of Glass, Chemicals and Hazardous Chemicals, Wood, Citrus, Chrome, Stock Feeds and various Steel.**



**In order to make cross-border work simpler, we have made the effort to familiarise ourselves by each border post we make use of. This has brought some advantages our way, by making most of the border processes much easier for us on a daily basis through the use of loyal agencies, border-runners and well established communication.**



# FLEET IN DETAIL

We like to think that we are different from other Brokers, since we have a unique relationship with the Sub-Contractors we use.

We have fixed/dedicated Sub-Contractors – they only load for us. They Sub-Contract with us on a permanent basis, thus gives us the advantage to be involved in their management and professionalism.

We have 24hour access to the whereabouts of the vehicles through a tracking system (compulsory when joining our fleet) accessible at any time and we have created group contacts to get in touch with all drivers. This strategy we created is mainly to get all sorts of information to and from the drivers whilst on route. It makes communication much easier for us and gives accurate feedback to our clients.



INTRANS INVESTMENTS	→	ZIM OWNED	→	2 X TRI-AXLES
SHAMWARI TRANSPORT	→	SA OWNED	→	1 X TRI-AXLE
MITAZEL TRANSPORT	→	SA OWNED	→	3 X TRI-AXLES
DANAGE INVESTMENTS	→	ZIM OWNED	→	1 X TRI-AXLE
CHIMWAZANDO	→	SA OWNED	→	2 X SUPERLINKS
KASLEX TRUCKING	→	SA OWNED	→	2 X SUPERLINKS
MATAMBO INVESTMENTS	→	ZIM OWNED	→	2 X SUPERLINKS
TRANSMEC AFRICA CARRIERS	→	SA OWNED	→	30+ X SUPERLINKS
BLESS IT UP	→	SA OWNED	→	1 X SUPERLINK
BUDMO TRANSPORT	→	SA OWNED	→	10+ X SUPERLINKS 5+ X TRI-AXLES
THERANODY TRANSPORT	→	ZIM/SA OWNED	→	1 X SUPERLINK 5 X TRI-AXLES
DIESEL DOCTOR	→	SA OWNED	→	4 X SUPERLINKS 3 X TRI-AXLES
AMERICAN MIRACLE	→	SA OWNED	→	1 X SUPERLINK 4 X TRI-AXLES



# CONTACT US



Email us at:

[manager@mandrelogistics.co.za](mailto:manager@mandrelogistics.co.za)  
[andre@mandrelogistics.co.za](mailto:andre@mandrelogistics.co.za)



Contact us on: Tel: 011 915-5831      Manager: 071 334 2832



Visit our Website at [www.mandrelogistics.co.za](http://www.mandrelogistics.co.za)



Visit our Instagram Page Mandre Logistics [MandreLogistics](https://www.instagram.com/MandreLogistics)



Visit our Facebook Page Mandre Logistics [@MandreLogisticsSA](https://www.facebook.com/MandreLogisticsSA)



Office and Yard: 1 Strauss Street, Van Eck Park, Brakpan